



West Devon Borough Council

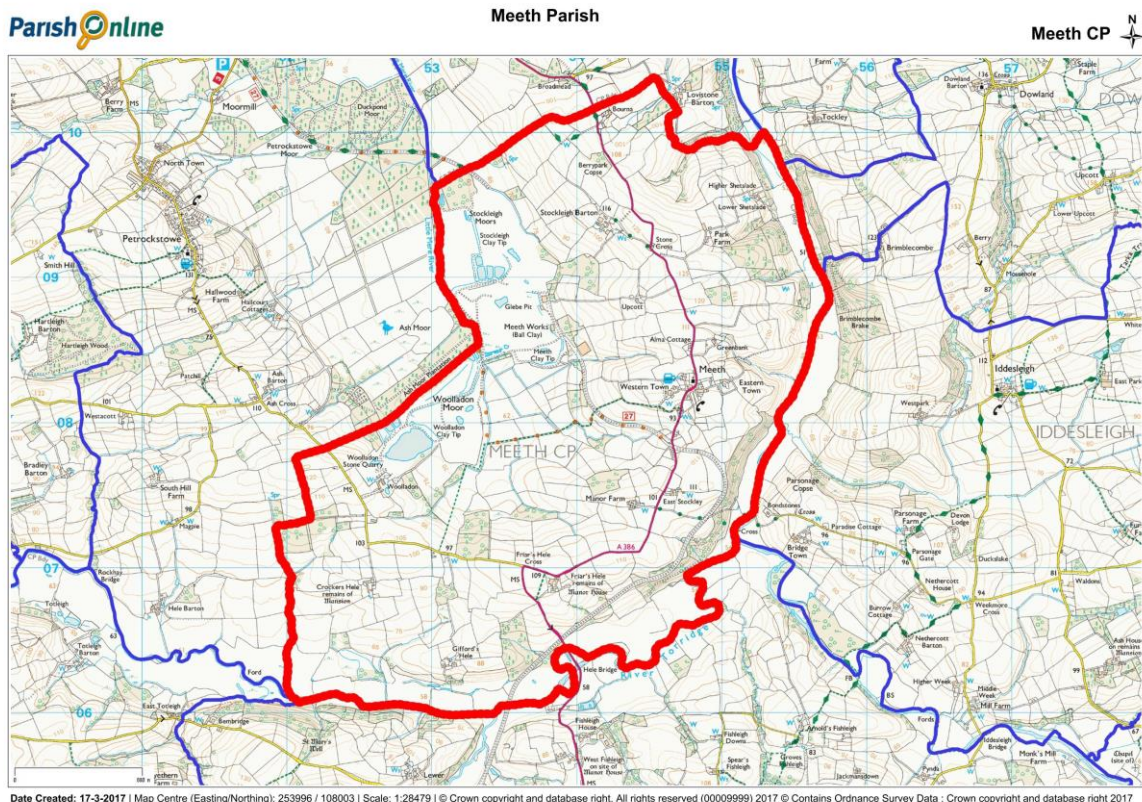
West Devon Borough Council Public Notice

DESIGNATION OF A NEIGHBOURHOOD PLAN AREA

Meeth Parish Council have applied and been successful in designating a Neighbourhood Plan area. This plan will consider how and where future development could take place in Meeth Parish.

To view the plan area application please visit <http://wdbcweb.swdevon.lan/wdneighbourhoodplans> or contact the Council's Neighbourhood Planning Team, neighbourhood.planning@swdevon.gov.uk for more information.

The proposed neighbourhood plan area follows the existing Parish boundary and there will be a chance for you to input into this plan in the future via the neighbourhood plan group.



Please note: Any comments made about the proposed plan area cannot be treated as confidential and may be made publicly available at the Council's offices and on the website. Your personal information will be held securely by South Hams District Council for the above purpose, in accordance with the Data Protection Act 1998.